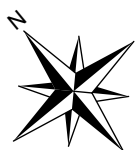


◀ **T3-105**

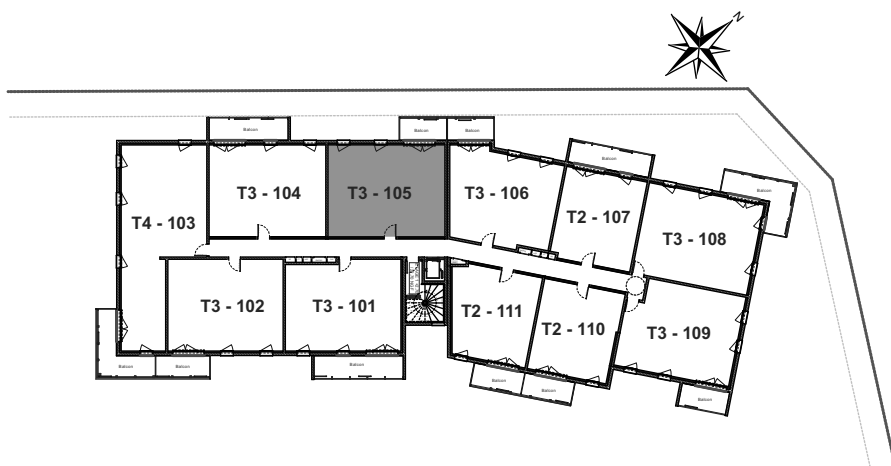


Date : 28-04-23

**APPARTEMENT N° 105
ETAGE 1 Type T3**

Sejour cuisine	24,25
Ch1	12,88
Ch2	9,20
Entrée	6,78
Sde	6,25
Wc	2,59
PL1	1,17
PL3	0,97
PL2	0,37
Surface habitable :	64,46 m²

Balcon	6,41
--------	------



Plan de repérage